

Animal Shelter Report

January 2020

Movements and Outcomes	Cats	Dogs	Total
<i>Census at Beginning of Period</i>	2	15	17
<i>Animals Entering the Shelter During Period</i>			
Abandoned		9	9
Biting		1	1
Feral	3		3
Sick/Injured		3	3
Stray	3	20	23
Surrender		2	2
Total Animals Entering the Shelter During Period	6	35	41
<i>Live Outcomes</i>			
Adopted	2	5	7
Reclaimed by Owner		2	2
Transferred (Rescued)		25	25
<i>Deceased</i>	3	8	11
Humanely Euthanized (see details below)	3	8	11
Total Animals Leaving the Shelter During Period	5	40	45
<i>Census at End of Period</i>	3	10	13

Animals Housed During Period (Beginning Census + Intakes)	8	50	58
Live Outcomes	2	32	34
Deceased	3	8	11
At Shelter at end of period	3	10	13

Number of Animal Control Calls Responded To			
Animals picked up in the city of Metter	3	8	11
Animals picked up elsewhere in the county	3	27	30
Total Calls Responded To	6	35	41

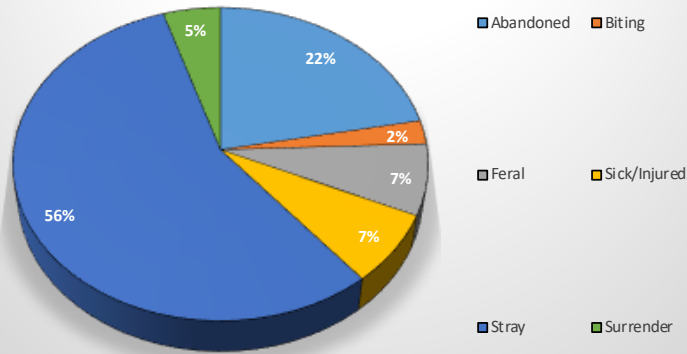
Average Length of Stay (in Days)	Cats	Dogs	Total
For Animals at Shelter at End of Period	8.7	14.0	12.8

Euthanasia Reasons	Cats	Dogs	Total
Biting		1	1
Feral	3	1	4
Requested by Owner		3	3
Sick/Injured		3	3
Total Humanely Euthanized	3	8	11

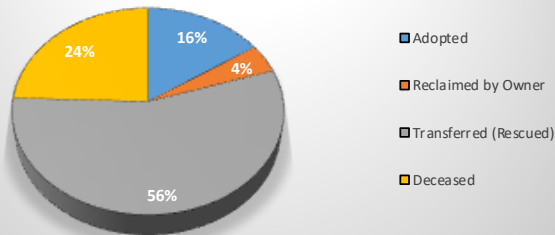
Animal Shelter Report

January 2020

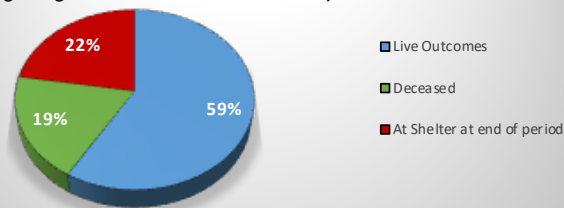
Reasons for Entering the Shelter



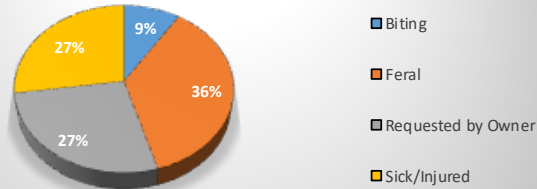
Reasons For Leaving the Shelter



Outcomes for Animals Housed at the Shelter (Including Beginning Census & All Intakes This Month)



Euthanasia Reasons



Pickups by Jurisdiction

